



**FiberExpress (FX) Fusion is a new line of fiber splice-on connectors that expands your possibilities with field-termination and provides superior performance over mechanical splice options. Both LC and SC connectors are available in multimode and singlemode fiber grades. See the reverse side for ordering information.**

### Why should I use splice-on connectors?

FX Fusion splice-on connectors combine the benefits of fusion splicing with the simplicity of a field-installable connector. When compared to mechanical field terminated connectors, splice-on technology provides superior performance that is essential to high speed transmission and supports 25G, 40G, and 100G applications. With FX Fusion, you get a premium solution without the premium price!



### Why are splice-on connectors better than mechanical splice connectors?

Splice-on connectors use automated fusion splicers that precisely align fibers and weld the fiber ends together. This technology greatly reduces optical losses that occur from fiber misalignment and eliminates gaps between the fiber ends. All of this leads to improved insertion loss and return loss performance.

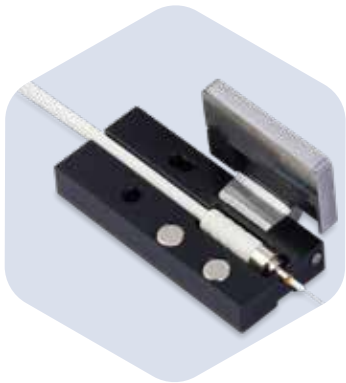


### I have already invested in a fusion splicer. Will FX Fusion connectors work with my splicer?

By using Belden's custom designed ferrule holders, FX Fusion connectors will work with almost all fusion splicers on the market today. To find the right holder for your splicer, visit [www.belden.com/splice-on](http://www.belden.com/splice-on) or talk to your sales representative.

### How can FX Fusion make my installation easier?

Because the fiber splice is protected inside of the robust connector housing, FX Fusion connectors eliminates the need for excess cable slack and allows exact length channels to be ran. No more cable shorts or working with excess cable! Splice-on connectors also require fewer splice management accessories such as splice trays, thus speeding up your deployment and reducing costs.



### Can FX Fusion connectors be used for indoor and outdoor applications?

Yes, the same connector can be used in either indoor or outdoor applications. FX Fusion connectors meet TIA-568-D3 and GR-326/1081.



## Ordering Information

To use the tailored *SmartPart* configuration matrices, make a selection from each category and combine to form a custom part number. See example(s) below.

### FX Fusion Multimode Connectors

Description	Belden Part Number		
	Multimode, OM1 - Beige	Multimode, OM3/OM4 - Aqua	Multimode, OM4 - Erika Violet
LC with 900 µm Boot, 1/Pack	<b>FT1LC900FS01</b>	<b>FT3LC900FS01</b>	<b>FT4LC900FS01</b>
SC with 900 µm Boot, 1/Pack	<b>FT1SC900FS01</b>	<b>FT3SC900FS01</b>	<b>FT4SC900FS01</b>

### FX Fusion Singlemode Connectors

Description	Belden Part Number	
	Singlemode, OS2 - Blue	Singlemode, OS2/APC - Green
LC with 900 µm Boot, 1/Pack	<b>FTSLC900FS01</b>	<b>FTSLB900FS01</b>
SC with 900 µm Boot, 1/Pack	<b>FTSSC900FS01</b>	<b>FTSSB900FS01</b>

### Tailored FX Fusion Field Termination

Part number example from configuration shown below:

**FT3LC900FS01**

FT	3		LC		900		F		S01	
Field Termination	Fiber Type		Connector		Cable Type		Family		Packaging	
	1	OM1	LC	LC Simplex	900	Tight Buffer	F	Splice-On	S01	Single Pack
	3	OM3	LB	LC/APC Simplex	2MM	Jacketed				
	4	OM4	SC	SC Simplex						
	S	OS2	SB	SC/APC Simplex						

### FX Fusion Accessories

Description	Belden Part Number
Precision Tool Kit	<b>FXFSTOPTK</b>
Standard Tool Kit	<b>FXFSTOSTK</b>
Precision Cleaver	<b>FXFSTOPCL</b>
Standard Cleaver	<b>FXFSTOSCL</b>
Splice Holder Family 1	<b>FXFSSHFM1*</b>
Splice Holder Family 2	<b>FXFSSHFM2</b>
Slitter for Jacketed Fiber	<b>FXFSTOSLT</b>

\*FXFSSHFM1 Holder compatible with Fujikura 60S, Fujikura 70S, Sumitomo Q101, among many others. Visit [www.belden.com/splice-on](http://www.belden.com/splice-on) for more details.

### FiberExpress Field-Termination FX Fusion Configurator

Part number example from configuration shown below:

**FXFSTOSTK**

FX	FS		TO		STK	
FiberExpress	Product Family		Product Type		Other Information	
	FS	FX Fusion	TO	Tools	SPL	Splicer Kit
			SH	Splice Holder	PTK	Precision Tool Kit
					PCL	Precision Cleaver
					SLT	Slitter for Jacketed Fiber
					STK	Standard Tool Kit
					SCL	Standard Cleaver
					FM1	Splice Holder Family 1
					FM2	Splice Holder Family 2

To learn more call us at  
**+31 (0)77 3875 414** or visit  
[www.belden.com/splice-on](http://www.belden.com/splice-on)

© Copyright 2018, Belden Inc.  
FX Fusion FAQ and Ordering Guide\_ECOS\_BDC\_0418\_ENG\_EMEA